

Drive components



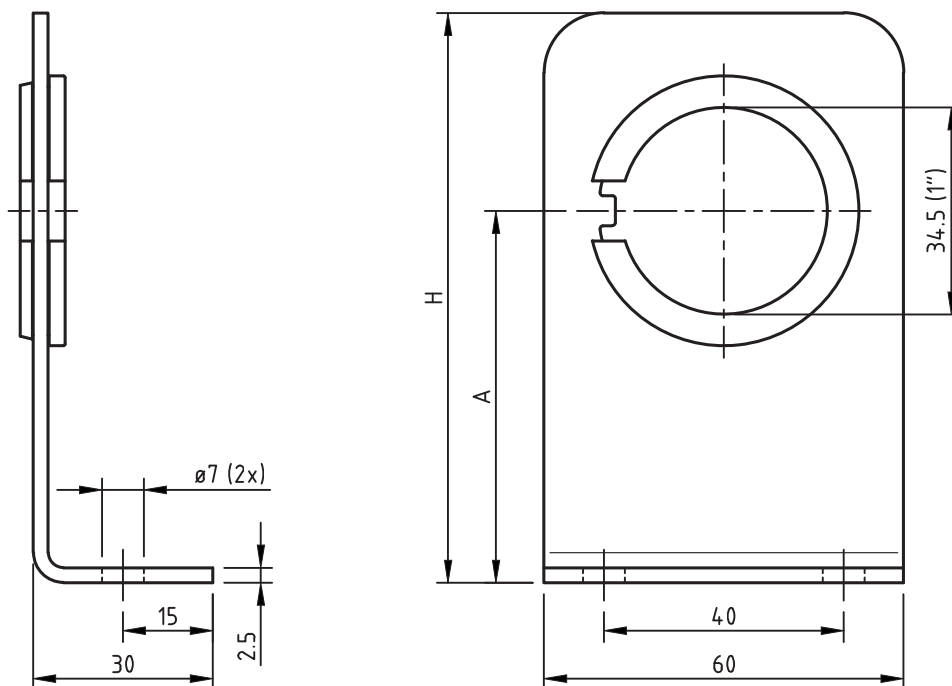


The right angled 1" slide bearing plates support and guide the drive tubes.

The sendzimir galvanised bearing plate has a sinter bronze slide bearing ring.

Straight 1" slide bearing plates are also available. Both types are also available for 5/4" drive tubes.

Other lengths are available on request.



Description	A [mm]	H [mm]	L [mm]	m [g]	Article number
Slide bearing plate 1", right angled	42	75	100	122	P.GL100.H.L100
Slide bearing plate 1", right angled	62	95	120	138	P.GL100.H.L120
Slide bearing plate 1", right angled	82	115	140	154	P.GL100.H.L140
Slide bearing plate 1", right angled	120	153	178	164	P.GL100.H.L178
Slide bearing plate 1", right angled	142	175	200	234	P.GL100.H.L200
Slide bearing plate 1", right angled	162	195	220	250	P.GL100.H.L220

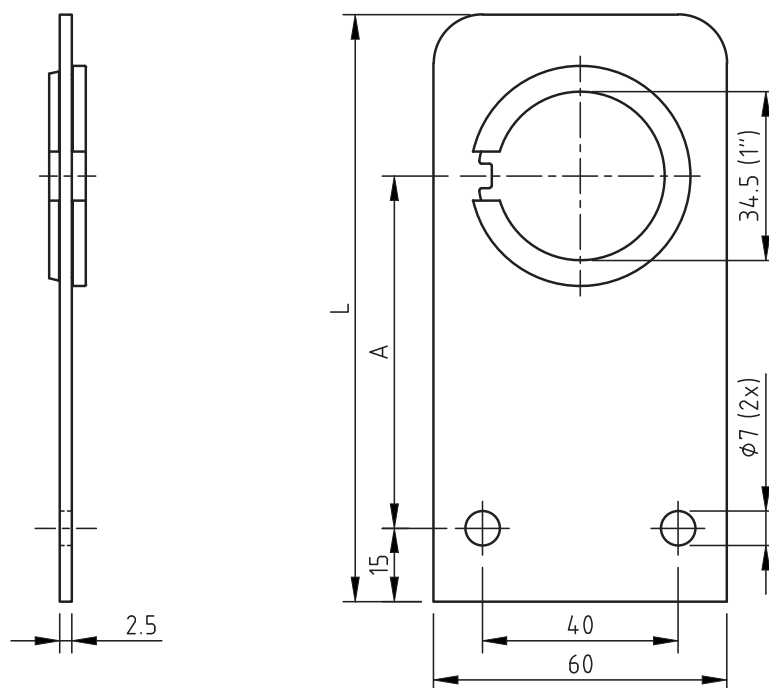
SLIDE BEARING PLATE 1", STRAIGHT

The straight 1" slide bearing plates support and guide the drive tubes.

The sendzimir galvanised bearing plate has a sinter bronze slide bearing ring.

Right angled 1" slide bearing plates are also available. Both types are also available for 5/4" drive tubes.

Other lengths are available on request.



Description	A [mm]	L [mm]	m [g]	Article number
Slide bearing plate 1", straight	52	100	122	P.GL100.R.L100
Slide bearing plate 1", straight	72	120	138	P.GL100.R.L120
Slide bearing plate 1", straight	92	140	154	P.GL100.R.L140
Slide bearing plate 1", straight	102	150	164	P.GL100.R.L150
Slide bearing plate 1", straight	152	200	234	P.GL100.R.L200
Slide bearing plate 1", straight	172	220	250	P.GL100.R.L220

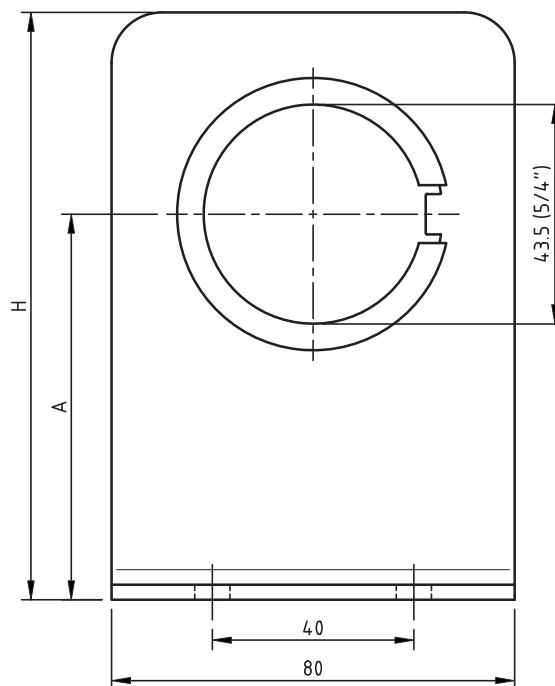
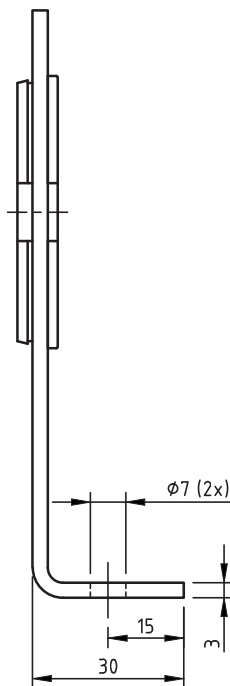


The right angled 5/4" slide bearing plates support and guide the drive tubes.

The sendzimir galvanised bearing plate has a sinter bronze slide bearing ring.

Straight 5/4" slide-bearing plates are also available. Both types are also available for 1" drive tubes.

Other lengths are available on request.



Description	A [mm]	H [mm]	L [mm]	m [g]	Article number
Slide bearing plate 5/4", right angled	36	76	100	330	P.GL125.H.L100
Slide bearing plate 5/4", right angled	56	96	120	350	P.GL125.H.L120
Slide bearing plate 5/4", right angled	76	116	140	354	P.GL125.H.L140
Slide bearing plate 5/4", right angled	86	126	150	392	P.GL125.H.L150
Slide bearing plate 5/4", right angled	136	176	200	428	P.GL125.H.L200

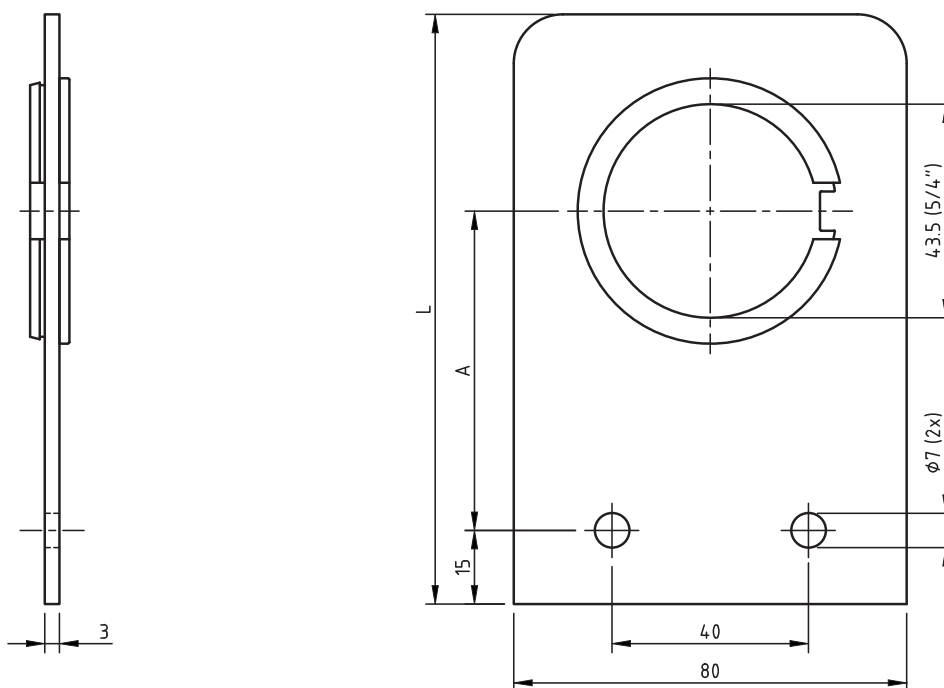
SLIDE BEARING PLATE 5/4", STRAIGHT

The straight 5/4" slide-bearing plates support and guide the drive tubes.

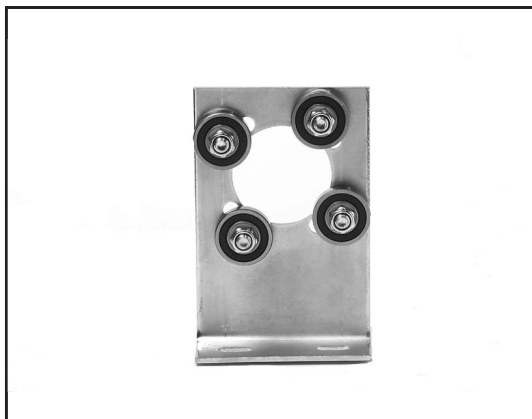
The sendzimir galvanised bearing plate has a sinter bronze slide bearing ring.

Right angled 5/4" slide-bearing plates are also available. Both types are also available for 1" drive tubes.

Other lengths are available on request.



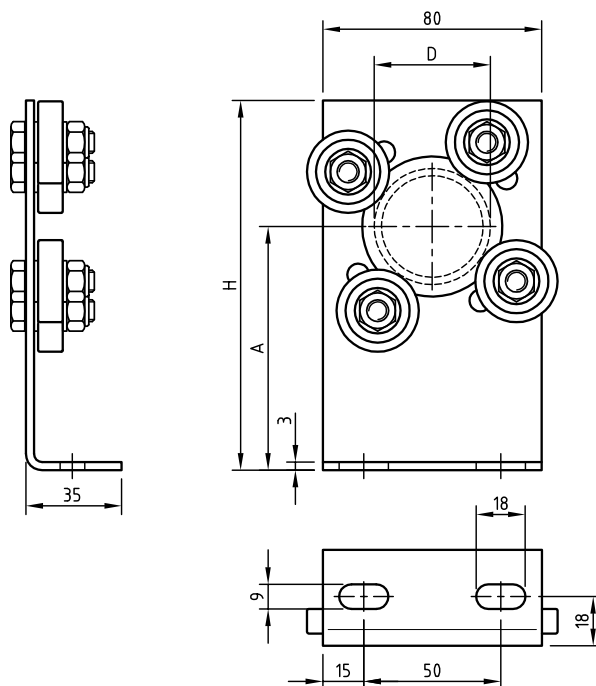
Description	A [mm]	L [mm]	m [g]	Article number
Slide bearing plate 5/4", straight	45	100	330	P.GL125.R.L100
Slide bearing plate 5/4", straight	65	120	340	P.GL125.R.L120
Slide bearing plate 5/4", straight	85	140	350	P.GL125.R.L140
Slide bearing plate 5/4", straight	95	150	354	P.GL125.R.L150
Slide bearing plate 5/4", straight	145	200	392	P.GL125.R.L200
Slide bearing plate 5/4", straight	185	240	428	P.GL125.R.L240



The ball bearing plates support the drive tubes.

The sendzimir galvanised bearing plate has four ball bearings. Rubber gaskets ensure that the bearings are permanently lubricated and maintenance-free. The ball bearing plate is available from stock for 1" or 5/4" drive tubes.

Other lengths are available on request.

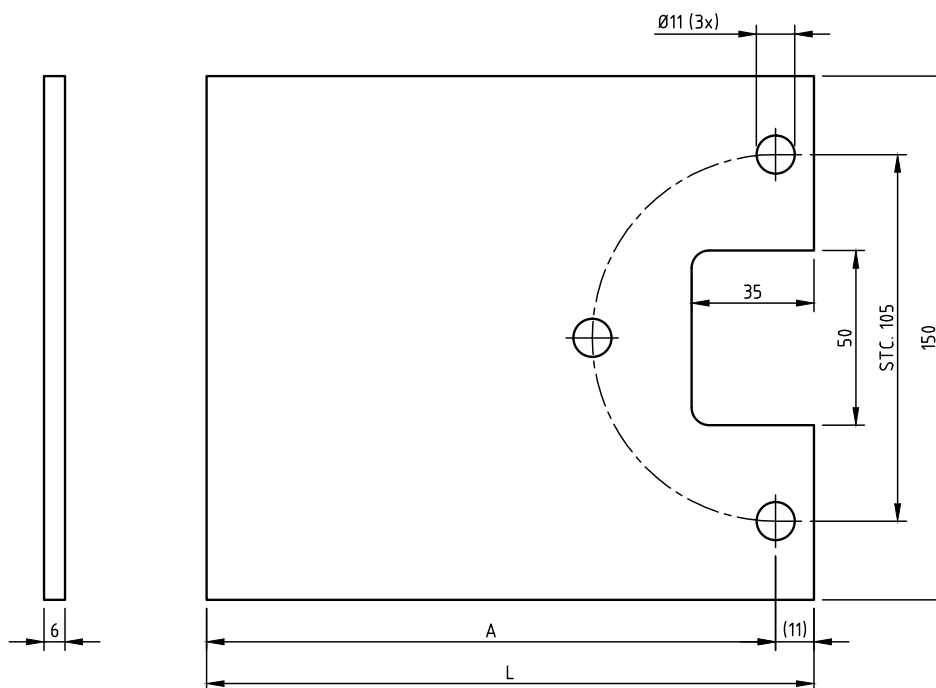
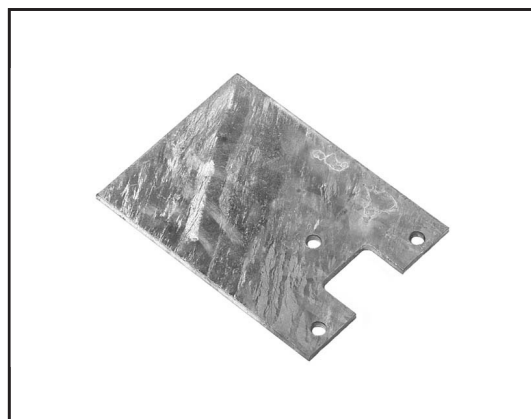


Description	Db [-]	D [mm]	A [mm]	H [mm]	m [kg]	Article number
Ball bearing plate 1", right angled	1"	34.5	89	135	0.60	P.KL100.H.A89
Ball bearing plate 1" right angled	1"	34.5	122	168	0.70	P.KL100.H.A122
Slide bearing plate 5/4", right angled	5/4"	43.5	89	135	0.60	P.KL125.H.A89
Slide bearing plate 5/4", right angled	5/4"	43.5	122	168	0.70	P.KL125.H.A122

MOUNTING PLATE GW, STRAIGHT

The mounting plate is used to attach the GW motor gearbox and GWK worm gearbox to the construction.

The galvanised straight mounting plate is suitable for the GW and GWK series (motor gearboxes). The A sizes 163 mm, 504 mm and 640 mm are standard. Other sizes are available on request. Right angled mounting plates are also available.



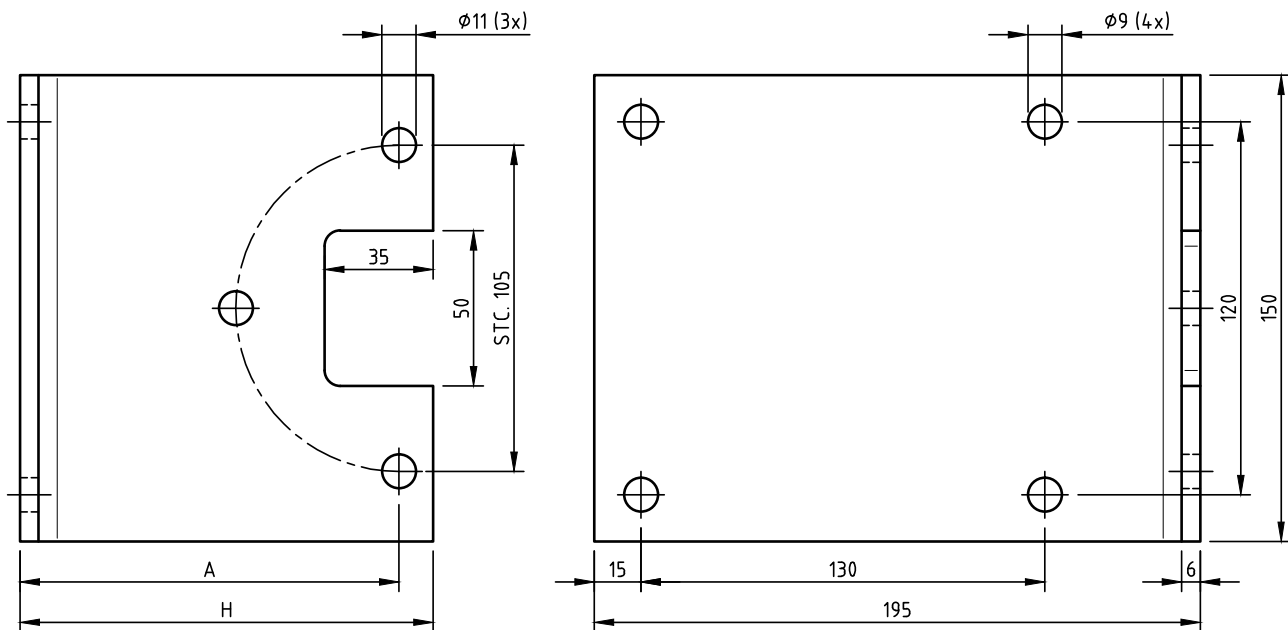
Description	A [mm]	m [kg]	Article number
Mounting plate GW, straight	163	1.2	P.MP.GW.R.A163
Mounting plate GW, straight	195	1.5	P.MP.GW.R.A195
Mounting plate GW, straight	504	3.7	P.MP.GW.R.A504
Mounting plate GW, straight	640	4.7	P.MP.GW.R.A640



The mounting plate is used for the attachment of a GW motor gearbox or GWK gearbox to the construction.

The galvanised right angled mounting plate is suitable for the GW and GWK series (motor gearboxes) and is fastened to the construction with bolts. The A size 122 mm is standard.

Other lengths are available on request. Straight mounting plates are also available.

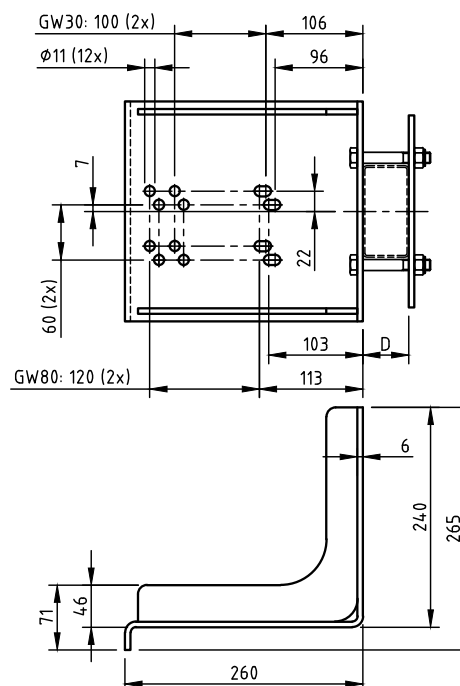
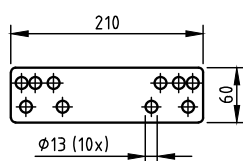
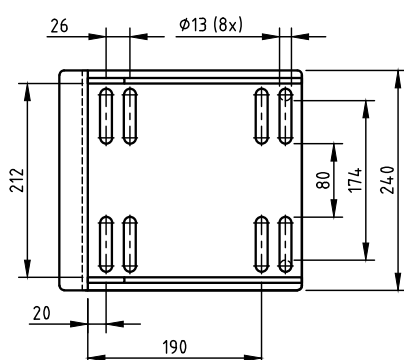


Description	A [mm]	H [mm]	m [kg]	Article number
Mounting plate GW, right angled	122	133	2.2	P.MP.GW.H.A122

The mounting seat is used for the attachment of a GW motor gearbox for screen systems to the column.

The galvanised mounting seat GW80 is suitable for the GW30, GW40 and GW80 motor gearboxes. The mounting seat can be attached to the column with the supplied mounting set and plates for the column depth that is given.

The standard widths for the columns are 80, 100, 140, 160 and 170. Mounting seats for other column sizes are available on request.



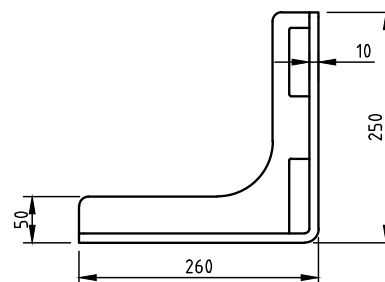
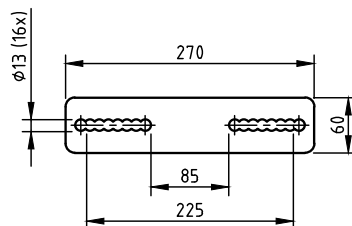
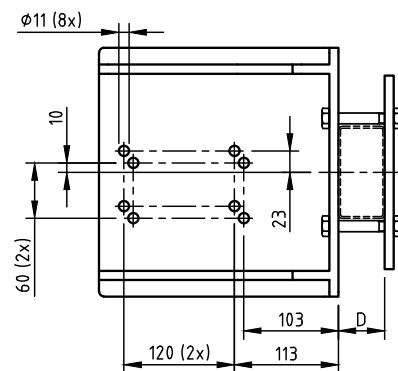
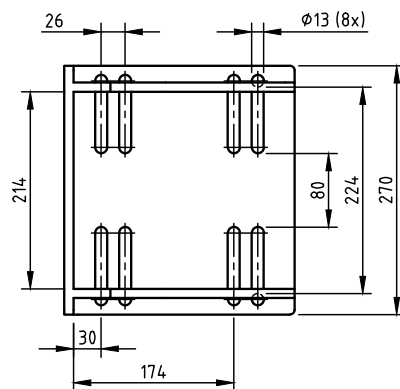
Description	D [mm]	m [kg]	Article number
Mounting seat GW30/80 + CP	-	7.9	P.MP.GWS.01
Mounting set mounting seat column 50	50	0.51	P.MP.GWS.BVM.50
Mounting set mounting seat column 60	60	0.54	P.MP.GWS.BVM.60
Mounting set mounting seat column 80	80	0.56	P.MP.GWS.BVM.80
Mounting set mounting seat column 100	100	0.68	P.MP.GWS.BVM.100
Mounting set mounting seat column 120	120	0.75	P.MP.GWS.BVM.120
Mounting set mounting seat column 140	140	0.81	P.MP.GWS.BVM.140



The mounting seat is used for the attachment of a GW motor gearbox for screen systems to the column.

The galvanised mounting seat GW150S is suitable for the GW110S and GW150S motor gearboxes.
The mounting seat can be attached to the column with the supplied mounting set and plates for the column depth that is given.

The standard widths for the columns are 80 - 220. Mounting seats for other column sizes are available on request.



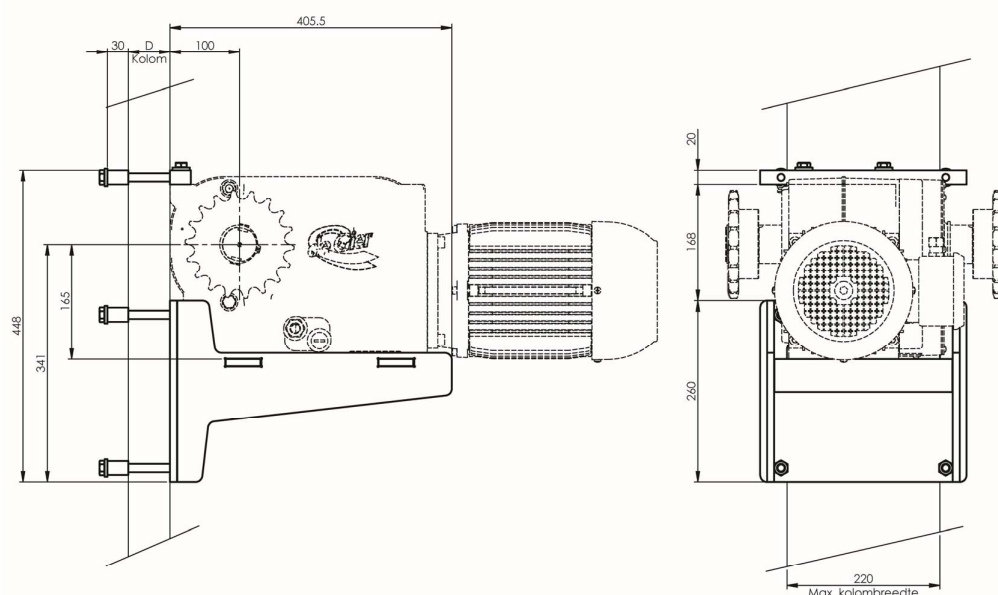
Description	D [mm]	m [kg]	Article number
Mounting seat GW150S + CP	-	14.2	P.MP.GWS.02
Mounting set mounting seat column 50	50	0.51	P.MP.GWS.BVM.50
Mounting set mounting seat column 60	60	0.54	P.MP.GWS.BVM.60
Mounting set mounting seat column 80	80	0.56	P.MP.GWS.BVM.80
Mounting set mounting seat column 100	100	0.68	P.MP.GWS.BVM.100
Mounting set mounting seat column 120	120	0.75	P.MP.GWS.BVM.120
Mounting set mounting seat column 140	140	0.81	P.MP.GWS.BVM.140

MOUNTING SEAT GW220S / GW270S

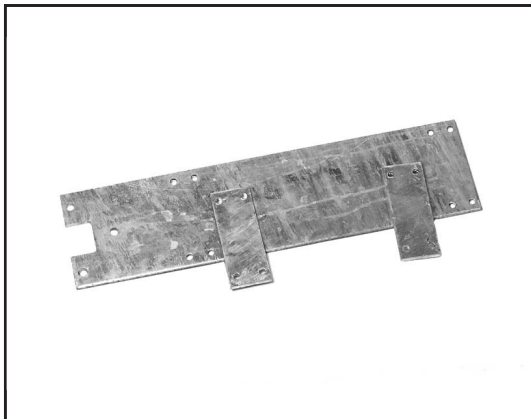
The mounting seat is used for the attachment of a GW220 or GW270 motor gearbox for screen systems to the column.

The mounting seat can be attached to the column with the supplied mounting set and plates for the column depth that is given. The seat has a recess at the bottom. This way the limit switch is accessible for setting whilst the screen is closed.

The mounting seat is suitable for columns with a width upto 250 mm.



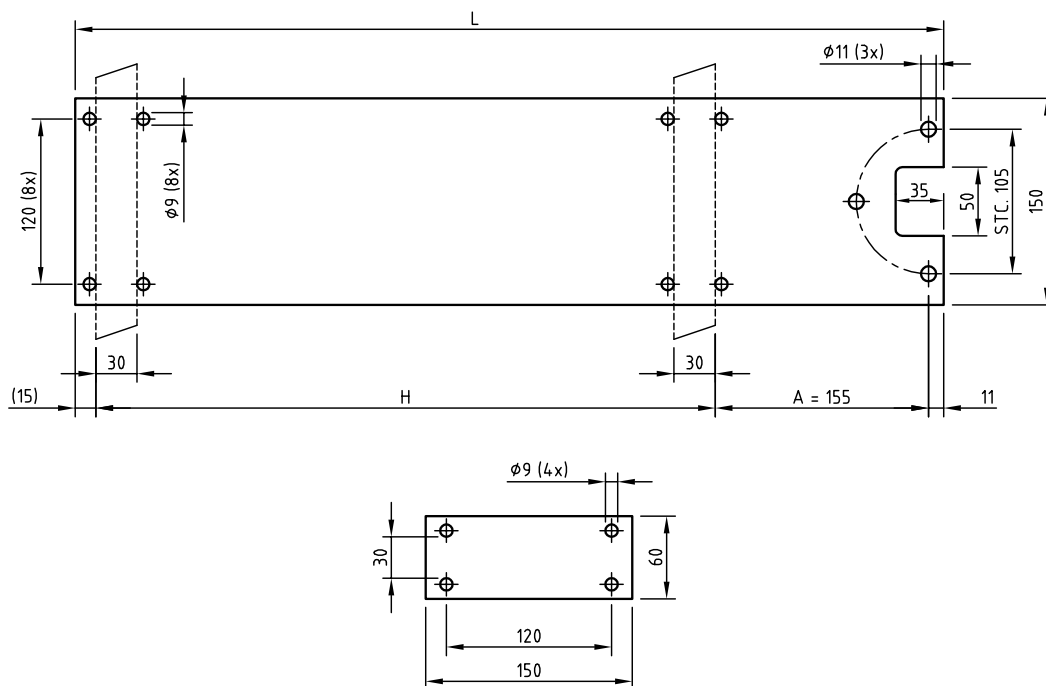
Description	D [mm]	m [kg]	Article number
Mounting seat GW300S + CP	-	42	P.MP.GW300S.01
Mounting set mounting seat column 80	80	1.0	P.MP.GWS.BVM.2.80
Mounting set mounting seat column 100	100	1.2	P.MP.GWS.BVM.2.100
Mounting set mounting seat column 120	120	1.4	P.MP.GWS.BVM.2.120
Mounting set mounting seat column 140	140	1.5	P.MP.GWS.BVM.2.140



The clamping mounting plate is used for the attachment of a GW motor gearbox in a truss-rail ventilation system.

The galvanised mounting plate is suitable for the GW10, GW30, GW40, GW80 and GW100 and is supplied with 2 locking plates for clamping the mounting plate to the truss. The truss shafts are assumed to have a standard height of 30 mm.

Mounting plates in varying sizes are available on request.



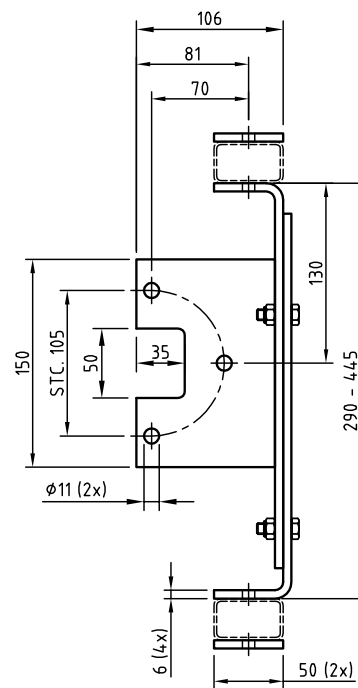
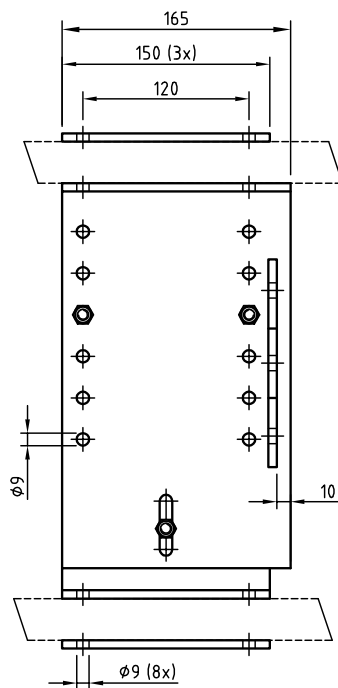
Description	L [mm]	H [mm]	m [kg]	Article number
Clamping mounting plate 350 mm truss	531	350	4.8	P.MP.KL.350.30
Clamping mounting plate 400 mm truss	581	400	5.2	P.MP.KL.400.30
Clamping mounting plate 410 mm truss	591	410	5.3	P.MP.KL.410.30
Clamping mounting plate 450 mm truss	631	450	5.5	P.MP.KL.450.30
Clamping mounting plate 500 mm truss	681	500	5.9	P.MP.KL.500.30
Clamping mounting plate 550 mm truss	731	550	6.2	P.MP.KL.550.30



The screen mounting plate, for the top screen, is used for the attachment of a GW motor gearbox in screen installations.

The galvanised mounting plate is suitable for the GW10, GW30, GW40 and GW80 and is mounted between the bars of the truss. The mounting plate can be variably adjusted between 290 mm and 445 mm as standard.

Mounting plates with varying sizes are available on request. The screen mounting plate for the top screen can also be supplied in combination with a mounting plate for the bottom screen.



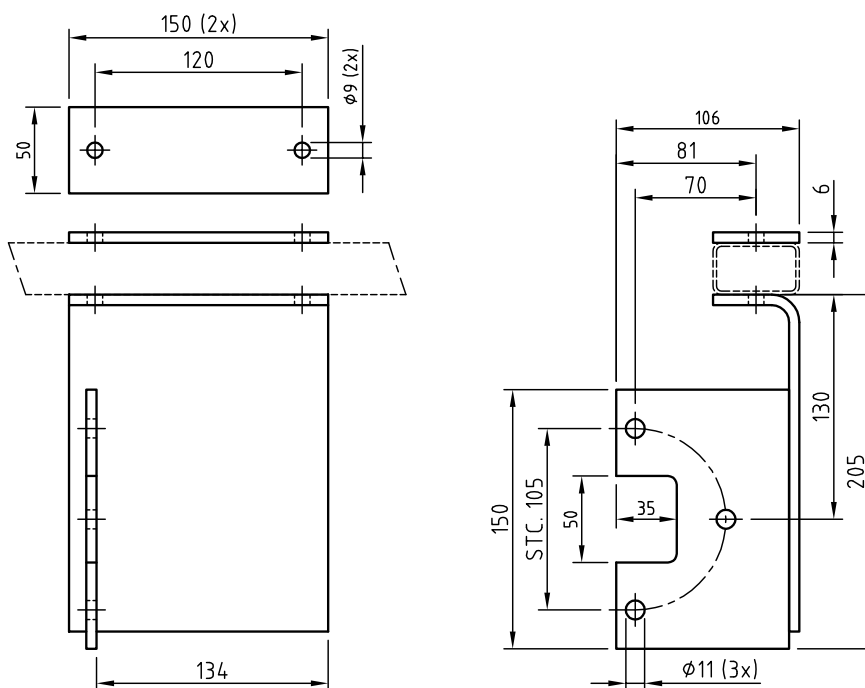
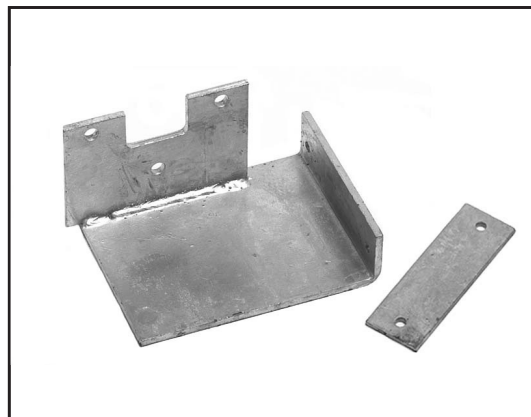
Description	m [kg]	Article number
Screen mounting plate (top screen)	6.0	P.SMP.GW.L290-445
Screen mounting plate (top and bottom screen)	8.7	P.SMP.GW.L290-445.O

SCREEN MOUNTING PLATE BOTTOM

The screen mounting plate for the bottom screen is used for the attachment of a GW motor gearbox in screen installations.

The galvanised mounting plate is suitable for the GW10, GW30, GW40 and GW80 and can be mounted below the truss.

Mounting plates in varying sizes are available on request. The screen mounting plate for the bottom screen can also be supplied in combination with a mounting plate for the top screen.

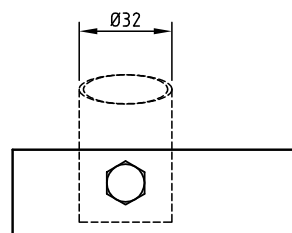
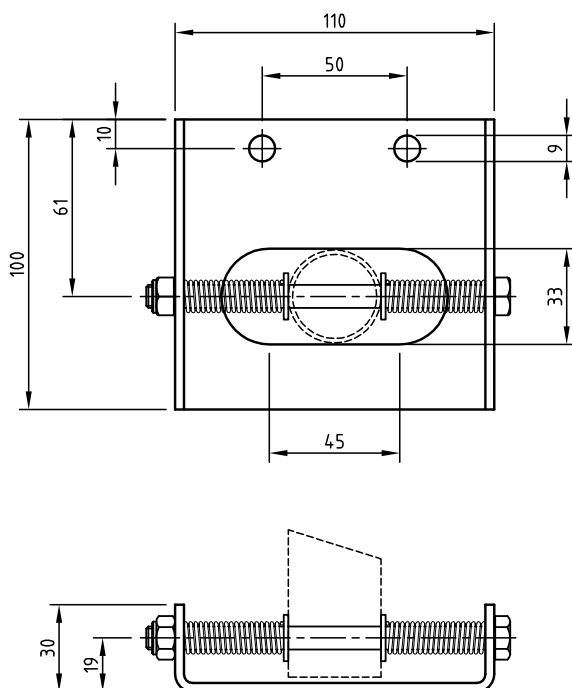


Description	m [kg]	Article number
Screen mounting plate (bottom screen)	2.7	P.SMP.GW.O
Screen mounting plate (top and bottom screen)	8.7	P.SMP.GW.L290-445.O



The galvanised mounting bracket for the GXP10 guidance, is used to fix the Ø32 mm guiding tube of the GXP10 to the floor. The spring construction allows the tube to move laterally and with that it allows the roll tubes to expand.

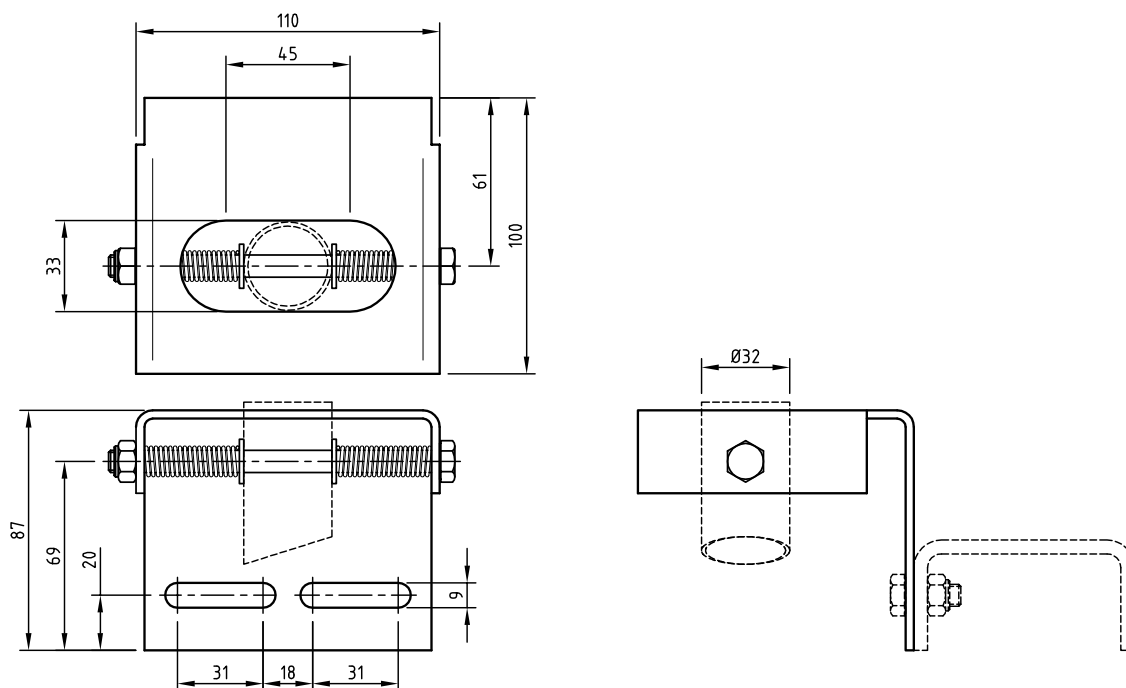
The mounting bracket can be fixed to the concrete with two M8 bolts.



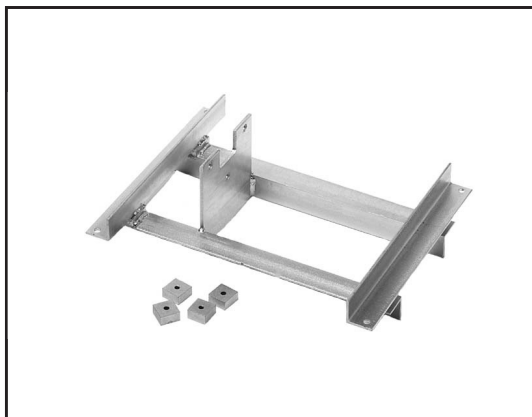
Description	m [g]	Article number
Mounting bracket bottom GXP10-guidance	380	P.BL.02.GXP10

The galvanised mounting bracket for the GXP10 guidance, is used to fix the Ø32 mm guiding tube of GXP10 to the wall. The spring construction allows the tube to move laterally and with that it allows the roll tubes to expand.

The mounting bracket can be fixed to the girder with two M8 bolts.

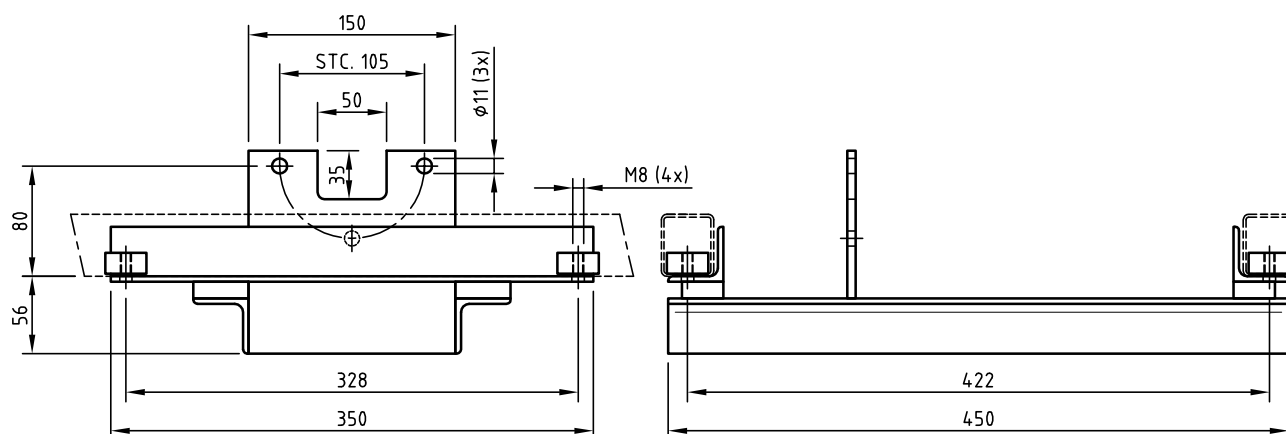


Description	m [g]	Article number
Mounting bracket top GXP10-guidance	550	P.BL.04.GXP10



The mounting support is used for the GW motor gearbox in swinging ventilation systems.

The galvanised mounting support is manufactured from rolled sections and must be hung beneath 2 c-sections. Each mounting support comes complete with 4 locking blocks with M8 thread.



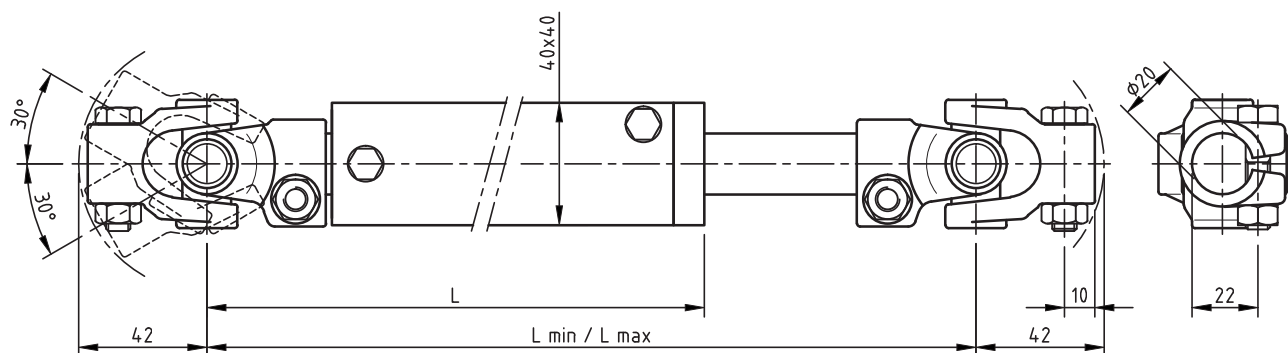
Description	m [kg]	Article number
Mounting support	5.5	P.MP.GW.MS

The telescopic arm TSP40 has been specially developed to drive the side ventilation in plastic greenhouses and stables. The roll tube of the ventilation system is connected by means of the TPS40 with the drive shaft of a GW10 motor gearbox.

The telescopic arm is manufactured from stainless steel, and is available for bridging various ventilation heights. Universal joints mounted on both ends provide a maximum angle of 30° in relation to the centre of the telescopic arm.

A coupling piece for the drive shaft of the GW10 is also available. The 1" or 5/4" roll tube can be connected to the TSP40 with a weld joint.

Other coupling pieces are available on request.

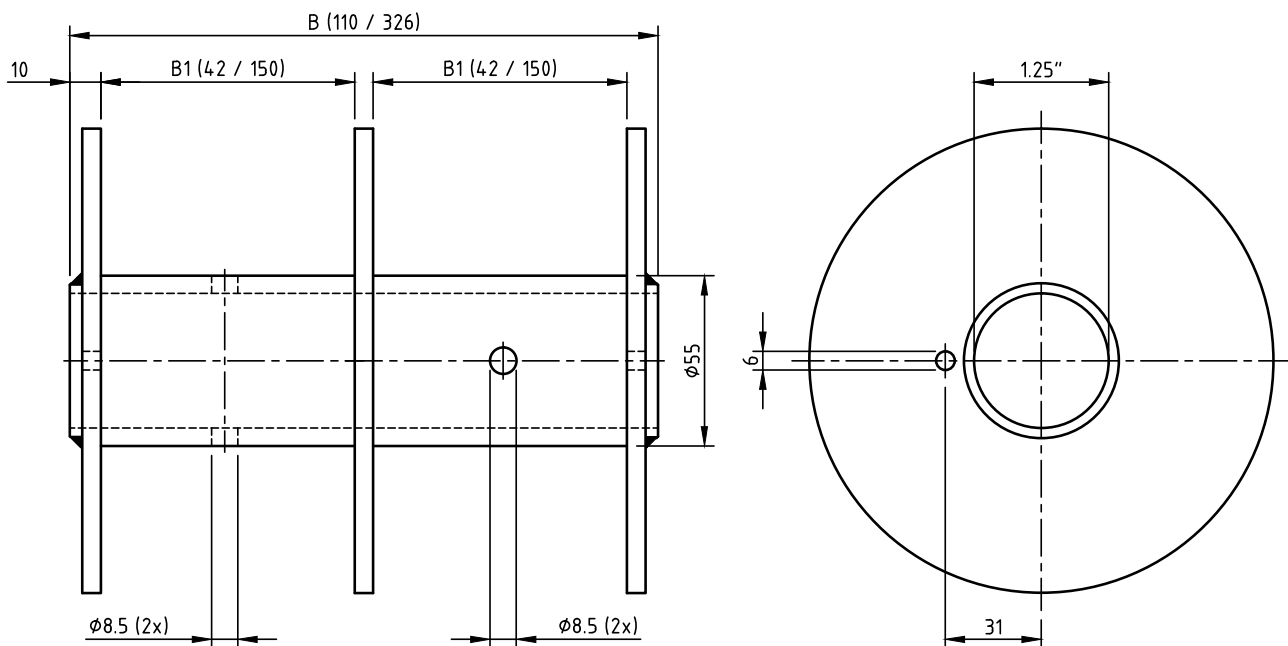


Description	T [Nm]	L [mm]	L min [mm]	L max [mm]	m [kg]	Article number
Telescopic arm, height 545 mm	40	420	416	548	2.8	P.TSP40.H545
Telescopic arm, height 1400 mm	40	760	801	1408	5.1	P.TSP40.H1400
Telescopic arm, height 1800 mm	40	1160	1201	1808	6.0	P.TSP40.H1800
Telescopic arm, height 2000 mm	40	1360	1401	2008	6.5	P.TSP40.H2000
Telescopic arm, height 2500 mm	40	1860	1901	2508	7.7	P.TSP40.H2500
Telescopic arm, height 3300 mm	40	2660	2701	3308	9.6	P.TSP40.H3300
Telescopic arm, height 4000 mm	40	3360	3401	4008	11.2	P.TSP40.H4000



The double winch drum is suitable for mounting over a 5/4" drive tube. The galvanised winch drum is fixed with two spring dowel pins and can be used for hoisting drinker- or feeder lines. Multiple winch drums can be placed on one 5/4" tube which is driven by a GW gearbox.

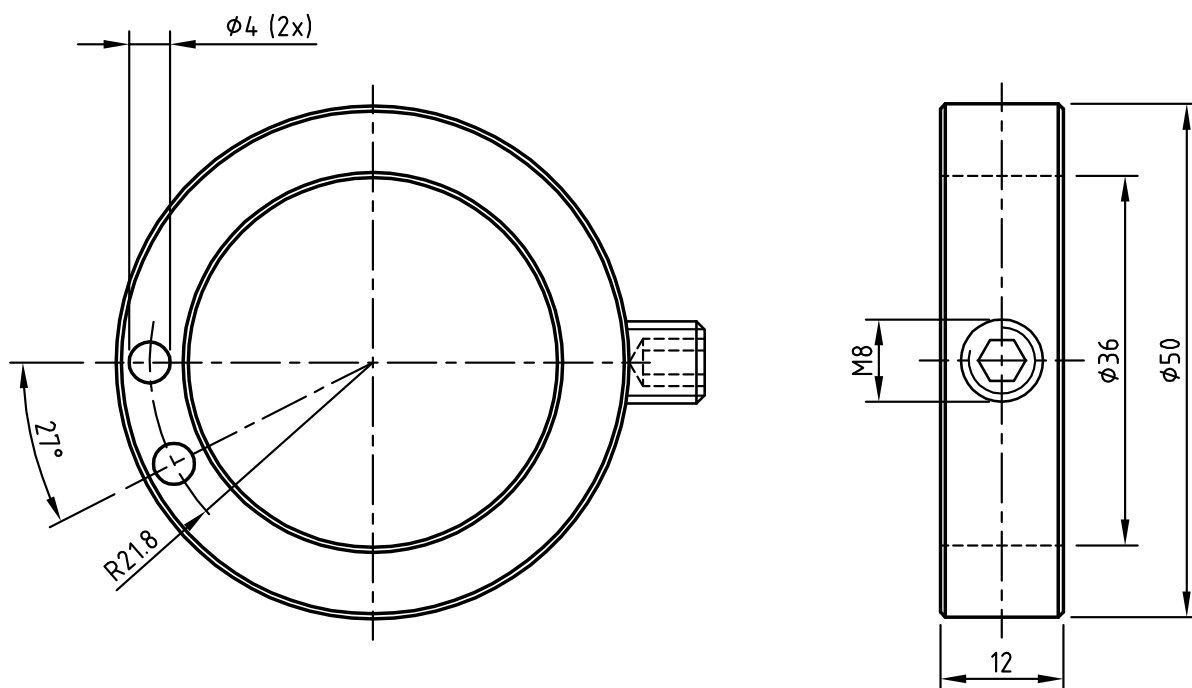
The double winch drum is available in two versions. The standard version is 110 mm wide. For extra cable capacity we have a version that is 326 mm wide.



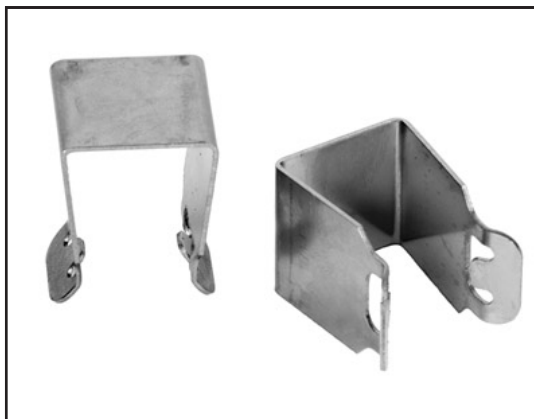
Description	Circumference [mm]	B [mm]	B1 [mm]	m [kg]	Article number
Winch drum 5/4", double, Bw = 84	172.8	110	2 x 42	2.8	P.LT2.D125
Winch drum 5/4", double, Bw = 300	172.8	326	2 x 150	4.4	P.LT2.D125.300

The cable ring is used in various applications, including hoist heating. The cable ring is used to attach the cable to the drive tube.

The galvanised steel ring is supplied with an M8 set screw to secure the ring to the drive tube.

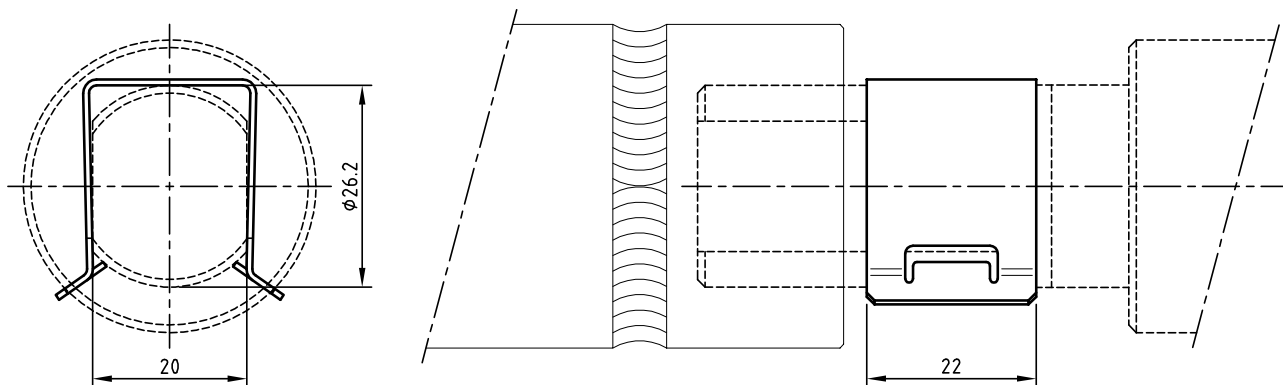


Description	m [g]	Article number
Cable ring 1"	90	P.KABELRING



The shaft clip is mounted on the ingoing shaft of the THG rack boxes in order to lock the prefabricated drive shafts.

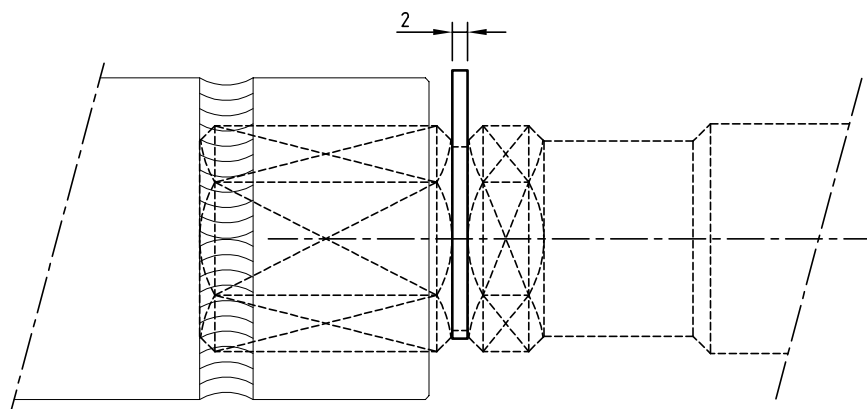
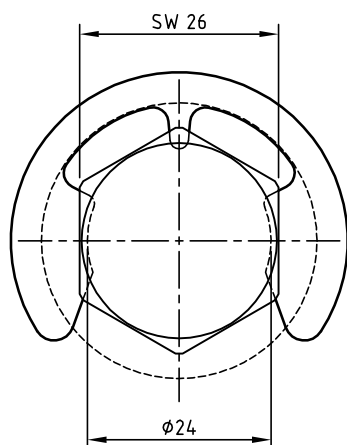
The shaft locking clip is manufactured from stainless steel. It is available for THG-shafts of $\varnothing 26.2$ mm with flat sides, with a width across flats of 20 mm.



Description	m [g]	Article number
Shaft locking clip	10.0	PAS-BORGCLIP

The axle securing clip is mounted on the ingoing shaft of the THG rack boxes in order to lock the prefabricated drive shafts.

The galvanised axle securing clip is available for hexagonal THG shafts with a jaw opening of 26 mm.



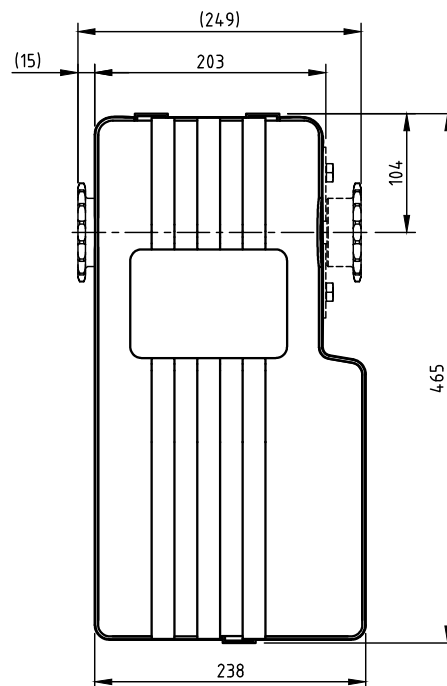
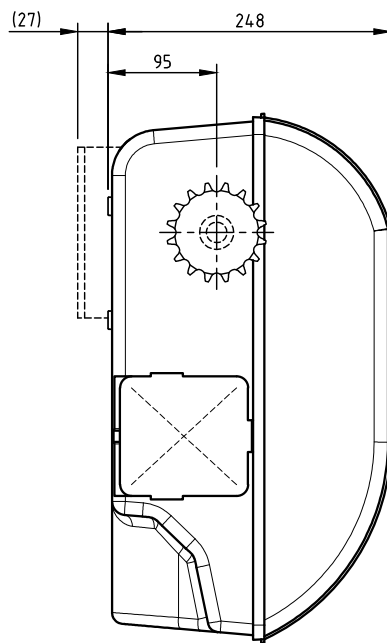
Omschrijving	m [g]	Artikelnummer
As-borgring Ø24 voor zeskant SW 26 mm	8,2	P.ABR.24



The plastic cover is especially designed to protect the GW10 from external influences when it is placed outdoors or in a wet or dirty environment.

The cover is mounted to the motor gearbox by means of the supplied plastic screws. Then the entire assembly can be mounted by means of a (right-angled) mounting plate.

The upper half of the cover can be removed easily which gives access to the limit switch. Besides this the cover is equipped with a removable panel which makes the terminal box of the electric motor accessible.



Description	m [g]	Article number
GW10 Motor cover	1.4	P.BHZ.01.GW10